

Technical Specifications

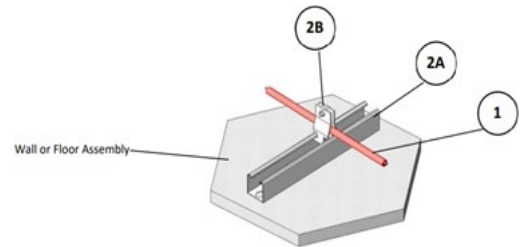
Model Number	CAFR-20A
Product Description	1/2", 2-Hr Rated Fire Resistive Cable, CMP Plenum, ETL Certified and Listed to UL 2196
Center Diameter	0.188"
Dia. Over Outer Conductor	0.550"
Max. Diameter Over Jacket	0.63"
Center Conductor	Solid Copper
Outer Conductor	Corrugated Copper
Maximum Frequency, GHz	1
Peak Power Rating	40 KW
DC Res, Ohms/1,000 ft:	
Center Conductor	0.29
Outer Conductor	0.39
DC Breakdown	2.5 kV
Jacket Spark	8 kV RMS
VSWR min, (dB)	1.50 dB (14.0)
Impedance, Ohms	50 ± 2
Min. Bend Radius	8"
Cable Clamp Spacing	2 ft.
Cable Weight	0.27 lb/ft
Bending Moment	4.0 ft lb
Tensile Strength	275 lb
Flat Plate Crush	110 lb/in
Install Temp.	+5° to 194°F
Storage Temp.	+5° to 194°F
Normal Operating Temp.	+5° to 194°F
Test Conditions:	
Attenuation	VSWR 1.0, Ambient 68°F
Average Power	VSWR 1.0, Ambient 104°F, Inner Conductor Temp. 212°F, No Solar Loading
Regulatory Compliance and Certifications	UL 2196 Circuit Integrity, ETL UL -2196 System Design TCI/SC 120-01 for 27 10 00 Structured Cabling, RoHS2011/65/EU Compliant, NFPA-70, Article 810, Comm Systems, NFPA-72, NFPA-130, NFPA-262 CMP, Canada CSA 22.2/FT6, UL-444, TL 9000 H-V



Attenuation and Average Power

Frequency MHz	Attenuation dB/100ft	Attenuation dB/100m	Average Power kW
150	1.12	3.67	4x.82
450	2.32	7.61	1.68
600	2.88	9.45	1.46
700	3.20	10.50	1.46
800	3.56	11.68	1.18
900	3.86	12.66	1.18

Cable Installation Requirements:



1: CAFR-20A Cable

2A: Strut Channels - Min. 12 GA x 1-5/8 in. wide x 1-5/8 in. high galvanized steel strut channels with max. 9/16 in. wide x 1-1/8 in. long holes on the base of the channel spaced at min. 2 in. oc. or no holes. Strut channels to be fastened to wall or floor assembly with fasteners spaced at max. 9 in. oc. and one at each end.

2B: CABLE CLAMPS - Min. 16 GA x 1-1/4 in. wide galvanized steel cable clamps sized for nom. 1/2 in. cable (Item 1) and designed for use with strut channels (Item 2A). Cable clamps use one galvanized steel bolt, min. #10 x 1in. long with nut.