

Significant Changes to the ICC A117.1 - Accessibility Standard - 2017 Edition

Significant Changes to the A117.1 Accessibility Standard 2017 Edition

Based on the 2017 A117.1 Accessibility Standard



Objectives

Upon completion of this seminar, participants will be better able to:

- Identify the most significant differences between the 2009 and the 2017 A117.1 Accessibility Standard.
- Explain the differences between the current and previous edition.
- Identify changes in organization and accessibility standard requirements.
- Identify the applicability of design, plan review and inspection requirements.
- Learn about the background, reasons and justification for changes.



Significant Changes to the ICC A117.1 - Accessibility Standard - 2017 Edition

3

Description

- This course offers an overview and in-depth coverage of the changes from the 2009 to the 2017 A117.1 Accessibility Standard.
- It identifies important changes in organization, accessibility standard requirements and the applicability of these requirements to design, plan review and inspection.



Significant Changes to the ICC A117.1 - Accessibility Standard - 2017 Edition

2

Organization

- Only a portion of changes addressed, identified for variety of reasons, including:
 - Frequency of application
 - Special significance
 - Change in application
- Importance of those changes not addressed are not to be diminished.



Significant Changes to the ICC A117.1 - Accessibility Standard - 2017 Edition

4

Significant Changes to the ICC A117.1 - Accessibility Standard - 2017 Edition

Significant Change Series

Types of Changes:

- Additions
- Modifications
- Clarifications
- Deletions

Code text:

- Deleted text is shown as strike-through.
- New text is underlined.



Significant Changes to the ICC A117.1 - Accessibility Standard - 2017 Edition

5

Revisions to text in the Standard

- | Margin line indicates revision to text.
- Arrow indicates deletion of section or exception.
- * Asterix indicates a move



Significant Changes to the ICC A117.1 - Accessibility Standard - 2017 Edition

7

Reference and Resource



Significant Changes to the A117.1 Accessibility Standard 2017 Edition



Significant Changes to the ICC A117.1 - Accessibility Standard - 2017 Edition

6

International Code changes – Governmental Consensus Process

Places the final determination of code provisions in the hands of public safety officials who, with no vested financial interest, can legitimately represent the public interest. The principles are:

- Openness
- Transparency
- Balance of Interest
- Due Process
- An Appeals Process
- Consensus



Significant Changes to the ICC A117.1 - Accessibility Standard - 2017 Edition

8

Significant Changes to the ICC A117.1 - Accessibility Standard - 2017 Edition

A117.1 Standard changes – ANSI Consensus Process

Places the final determination of the standard's provisions in the hands of the 52 committee members (46 organizations and 6 individual members). The principles are:

- Openness
- Transparency
- Balance of Interest
- Due Process
- An Appeals Process
- Consensus



Significant Changes to the ICC A117.1 - Accessibility Standard - 2017 Edition

9

A117.1 Standard: Change Process Logistics

- Operated on a 5 year development cycle.
- One cycle of development between editions – changes and public comments.
- Typical cycle: Years 1 and 2: study groups, Years 3, 4 and 5 processing changes and publication.
- Repeat



Significant Changes to the ICC A117.1 - Accessibility Standard - 2017 Edition

11

International Codes – Code Change Process Logistics

- I-Code published every 3 years.
- One cycle of code development between editions.
- Code split into three groups: A, B and C.
- Single cycle for each group comprised of both Code Development and Final Action Hearings.
- Next edition published.
- Repeat



Significant Changes to the ICC A117.1 - Accessibility Standard - 2017 Edition

10

ICC A117.1 Accessible and Usable Buildings and Facilities

- Standard & Commentaries.
- History, reasoning and examples
- Technical assistance via phone, email or letter.



Significant Changes to the ICC A117.1 - Accessibility Standard - 2017 Edition

12

Significant Changes to the ICC A117.1 - Accessibility Standard - 2017 Edition

Setting the Stage

- Who, What, Where, When and How



Accessibility performance requirements

Everything must be accessible, and then allow for a degree of inaccessibility that is logical and reasonable.



Significant Changes to the ICC A117.1 - Accessibility Standard - 2017 Edition

15



Purpose



Significant Changes to the ICC A117.1 - Accessibility Standard - 2017 Edition

Requirements

- Scoping Requirements:
 - “What, Where and How Many”
 - (2012, 2015 & 2018 editions of IBC and IEBC®)
- Technical Requirements:
 - “How”
 - (ICC/ANSI A117.1-2009)



Significant Changes to the ICC A117.1 - Accessibility Standard - 2017 Edition

16

Significant Changes to the ICC A117.1 - Accessibility Standard - 2017 Edition

Limitation of a referenced standards IBC Section 102.4

- Considered part of the code to the extent referenced
- Examples in A117.1 that are not referenced – stairways, Type C units
- Conflicts – codes rule



Significant Changes to the ICC A117.1 - Accessibility Standard - 2017 Edition

17

Role of the Code Official



Significant Changes to the ICC A117.1 - Accessibility Standard - 2017 Edition

19

ICC Goals

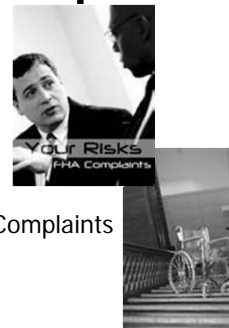
- Coordinate the building code requirements with the



Significant Changes to the ICC A117.1 - Accessibility Standard - 2017 Edition

18

Enforcement of Federal Requirements



Complaints



Inspection and Review



Mediation



Through the courts



Significant Changes to the ICC A117.1 - Accessibility Standard - 2017 Edition

20

Significant Changes to the ICC A117.1 - Accessibility Standard - 2017 Edition

Chapter 1: Application and Administration

- Calculation of Percentages
- Dimension Tolerances
- Definitions



Conventions:

105.2 Calculation of Percentages

- Not applicable to the required number of elements – Rounding down of minimum percentages is not intended

Example: Parking lot with 60 spaces requires 2% to be accessible spaces.

- $60 \text{ spaces} \times 2\% = 1.2 \text{ spaces}$
- Must provide 2 and may not round down even though ratio is less than one half



Significant Changes to the ICC A117.1 - Accessibility Standard - 2017 Edition

23

Conventions: 105.2 Calculation of Percentages (New)



- Intended to coordinate with ADA
- Allows rounding down ratios or percentages of less than one-half
- Applicable for required size or dimension
- Of very limited use in A117.1

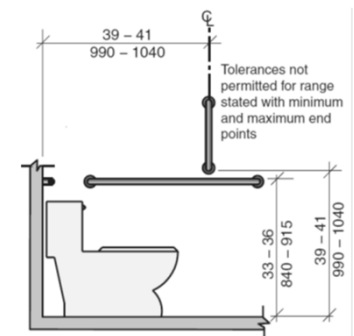


Significant Changes to the ICC A117.1 - Accessibility Standard - 2017 Edition

22

Conventions: 105.3 Dimension Tolerances

- Tolerance is not permitted for dimensions with a range (max. & min.)
- Previously “all” dimensions allowed a tolerance
- Done to coordinate with ADA



Significant Changes to the ICC A117.1 - Accessibility Standard - 2017 Edition

24

Significant Changes to the ICC A117.1 - Accessibility Standard - 2017 Edition

Conventions:

105.3 Dimension Tolerances

- “Conventional industry tolerances” are still permitted where dimension is only a minimum or maximum (not a range)
- Also eliminated language about “absolute” dimensions since it caused debate as to whether dimension tolerance was allowed



Significant Changes to the ICC A117.1 - Accessibility Standard - 2017 Edition

25

Definitions

107.5 Existing Building

- Definition becomes important in deciding if the provisions for new or existing building apply
 - Existing buildings will be permitted to use specific provisions from 2009 standard
 - New buildings will use provisions from 2017 standard – which generally require larger sizes



Significant Changes to the ICC A117.1 - Accessibility Standard - 2017 Edition

27



Definitions

107.5 Existing Building (New)



- New definition
- Needed due to desire to lessen impact of 2017 changes
- Defined as building erected prior to adoption of 2017 standard or for which a permit has been issued



Significant Changes to the ICC A117.1 - Accessibility Standard - 2017 Edition

26

Definitions

107.5 Wheelchair Charging Area (New)

- Defines space where a wheelchair's batteries can be recharged
- Details addressed later in Section 906
- Scoping is an important issue – Where is it required or regulated



Significant Changes to the ICC A117.1 - Accessibility Standard - 2017 Edition

28

Significant Changes to the ICC A117.1 - Accessibility Standard - 2017 Edition

Chapter 1

Additional Comments

- The term “accessible” has been removed at numerous (i.e. most) locations throughout the standard
- The elements within the standard are designed and intended to be accessible, therefore they do not need to be called “accessible” at each location.

Example: Water closets and toilet compartments



Significant Changes to the ICC A117.1 - Accessibility Standard - 2017 Edition

29



Chapter 2: Scoping

- Scoping

Chapter 1

Additional Comments

- Additional definitions have been added to Chapter 1 some will be discussed with the chapter that contains the technical criteria.



Significant Changes to the ICC A117.1 - Accessibility Standard - 2017 Edition

30

Chapter 2

- Section 201 - Remember that the provisions in ICC A117.1 are applicable only to the extent referenced by the authority having jurisdiction.
- This is repeated at the beginning of Chapter 3 through 11.
- The 2017 edition of the standard is not referenced by the 2018 IBC



Significant Changes to the ICC A117.1 - Accessibility Standard - 2017 Edition

32

Significant Changes to the ICC A117.1 - Accessibility Standard - 2017 Edition

Chapter 2

- Not all topics covered in the standard, as well as the significant changes discussed in this class, will be scoped

Examples:

Stairs, routes through a parking lot, sign language interpreter's station, Type C units, classroom acoustics, etc.



Significant Changes to the ICC A117.1 - Accessibility Standard - 2017 Edition

33

Human Factor Considerations

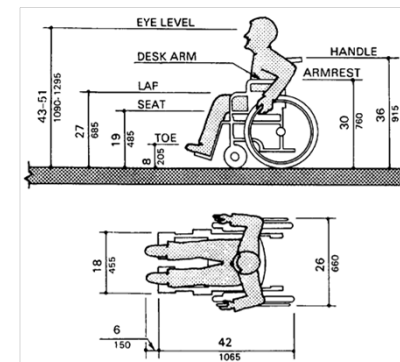
- Body Size
- Functional abilities

Chapter 3: Building Blocks

- Turning space
- Clear floor space
- Reach range
- Operable parts



Basis for Historic A117.1 - Dimensions of Adult-Sized Wheelchair



Significant Changes to the ICC A117.1 - Accessibility Standard - 2017 Edition

36

Significant Changes to the ICC A117.1 - Accessibility Standard - 2017 Edition

2017 ICC A117.1

- Revisions based on study on Anthropometry of Wheeled Mobility
 - Sponsored by the US Access Board
 - Including persons using manual wheelchairs, motorized wheelchairs & scooters
- <http://www.udeworld.com/anthropometrics.html>



Significant Changes to the ICC A117.1 - Accessibility Standard - 2017 Edition

37



Existing building and facilities

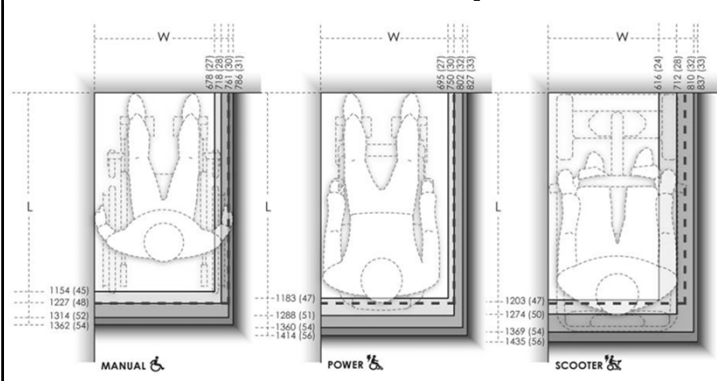
- New sizes will not apply to existing buildings or facilities
- Will apply to new construction and additions
- Definition:
 - existing building.** A building erected prior to the date of adoption of this standard, or one for which a legal building permit has been issued.



Significant Changes to the ICC A117.1 - Accessibility Standard - 2017 Edition

39

Human Factor Anthropometrics



Significant Changes to the ICC A117.1 - Accessibility Standard - 2017 Edition

38

Turning Space 304.3.1 Circular Space



- Size increased to 67" for new buildings
- Was previously 60"
- Amount of knee and toe clearance allowed for overlap is now limited to 10" max.
- Part of Wheeled Mobility Task Group work



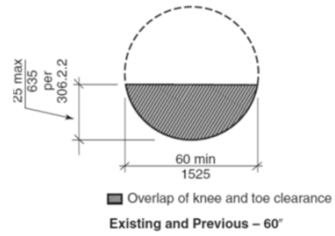
Significant Changes to the ICC A117.1 - Accessibility Standard - 2017 Edition

40

Significant Changes to the ICC A117.1 - Accessibility Standard - 2017 Edition

Turning Space 304.3.1 Circular Space

- Will accommodate about 95% of manual and power-wheelchair users.
- Previous size only served about 80%
- Existing buildings can use old sizes
- New provisions exceed ADA



Significant Changes to the ICC A117.1 - Accessibility Standard - 2017 Edition

41

Turning Space 304.3.2 T-shaped Space

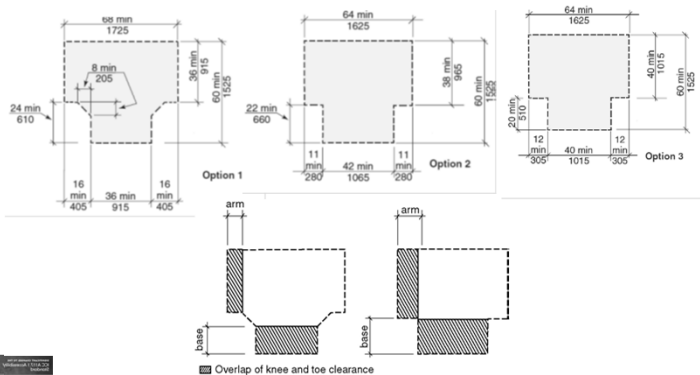
- New buildings have 3 options – all have an increase in size
- Vary based on width of arms and base
- No preference – any option is acceptable
- Existing buildings can continue with previous requirements
- Will exceed ADA



Significant Changes to the ICC A117.1 - Accessibility Standard - 2017 Edition

43

Turning Space 304.3.2 T-shaped Space



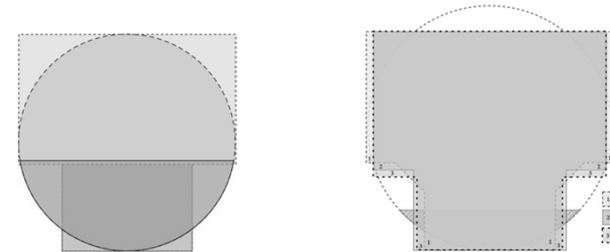
Significant Changes to the ICC A117.1 - Accessibility Standard - 2017 Edition

42

Impact - Turn comparison

Existing

New



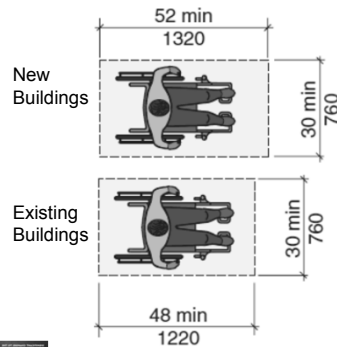
Significant Changes to the ICC A117.1 - Accessibility Standard - 2017 Edition

44

Significant Changes to the ICC A117.1 - Accessibility Standard - 2017 Edition

Clear Floor Space

305.3 Size



- Length of space increased to 52" min. for new buildings
- 48" length OK for existing buildings
- This "building block" requirement impacts many provisions
- Exceeds ADA



Significant Changes to the ICC A117.1 - Accessibility Standard - 2017 Edition

45

Reach Ranges

308.3.1 Unobstructed Side Reach

- Exception allows 54" max height for operable parts on fuel dispensers installed on existing curbs
- Coordinates with ADA
- Note the limits:
 - 54 inch max height
 - Curb must be existing
 - Only for fuel dispenser, not other elements



Significant Changes to the ICC A117.1 - Accessibility Standard - 2017 Edition

Workbook Page 3

47

Clear Floor Space

305.3 Size

- Research indicated 48" length inadequate for:
 - 22% of occupied WMDs
 - 12% of unoccupied WMDs
- 52" length will accommodate:
 - 89% of occupied WMDs
 - >95% of unoccupied WMDs
- Type B units will stay with 48" length

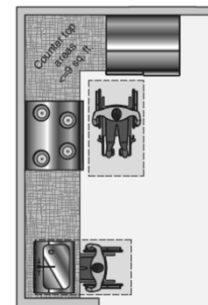


Significant Changes to the ICC A117.1 - Accessibility Standard - 2017 Edition

46

Operable Parts

309.1, 1102.9, 1103.9



- Exceptions for operable parts moved from Chapter 11 to Section 309
- Allows exceptions to be used for all public areas and not just in the dwelling units
- Eliminates exceptions in Accessible and Type A units
- Primary changes are:
 - New exception 3 and 10



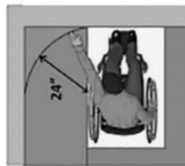
Significant Changes to the ICC A117.1 - Accessibility Standard - 2017 Edition

48

Significant Changes to the ICC A117.1 - Accessibility Standard - 2017 Edition

Operable Parts 309.1, 1102.9, 1103.9

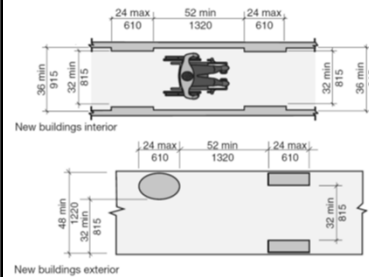
- Exception 3 covers outlets in kitchen. Limits include:
 - Location where parallel approach cannot be provided
 - Outlets are over counter in a corner
 - Excluded area < 9 sq. ft. in area
 - Excluded area is "between appliances"
- Exception 10 is for emergency devices used by emergency personnel, during emergencies



Significant Changes to the ICC A117.1 - Accessibility Standard - 2017 Edition

49

Walking Surfaces 403.5 Clear Width



- Width of exterior accessible routes increased to 48" min.
- Revisions made for interior routes in new buildings due to increased clear floor space
- Existing buildings are unchanged for inside



Significant Changes to the ICC A117.1 - Accessibility Standard - 2017 Edition

51

Chapter 4: Accessible Routes

- Curb ramps & transitions
- Elevators
- Platform lifts
- Clear width
- Width at turns
- Doors & gates



Walking Surfaces 403.5 Clear Width

- In new buildings, reduced width clearances must be separated by a min. of 52" length
- The new building interior route requirements will exceed ADA
- Exterior route requirements are intended to mirror federal Public Rights-of-Way guidelines (PROWAG)



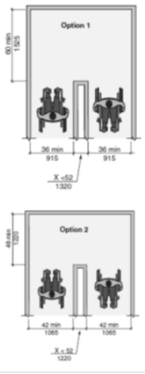
Significant Changes to the ICC A117.1 - Accessibility Standard - 2017 Edition

52

Significant Changes to the ICC A117.1 - Accessibility Standard - 2017 Edition

Clear Width

403.5.2 At 180-degree Turn



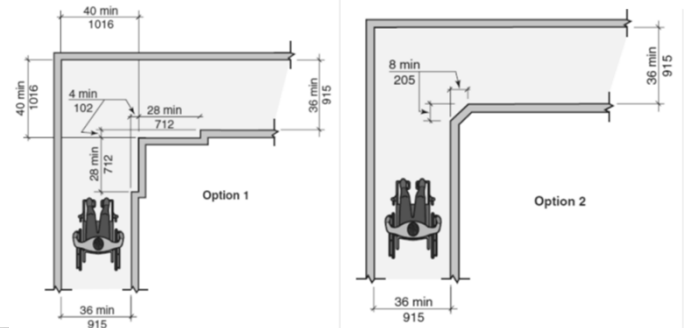
- New buildings have 3 options for 180-degree turns
- Changes made as result of increased clear floor space
- Turn around an object $\leq 52''$ use 180-degree provisions; if $> 52''$ then 90-degree turn is used
- Exceeds the ADA
- Options 1 & 2 are modifications of previous requirements

Significant Changes to the ICC A117.1 - Accessibility Standard - 2017 Edition

53

Clear Width

403.5.3 At 90-degree Turn (New)



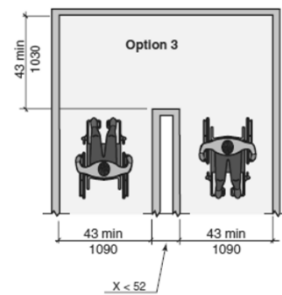
Significant Changes to the ICC A117.1 - Accessibility Standard - 2017 Edition

55

Clear Width

403.5.2 At 180-degree Turn

- Option 3 is new
- Although listed for new buildings – it should be permissible for existing also
- Research showed 43" option worked for 95% of both manual and powered chairs as well as scooters

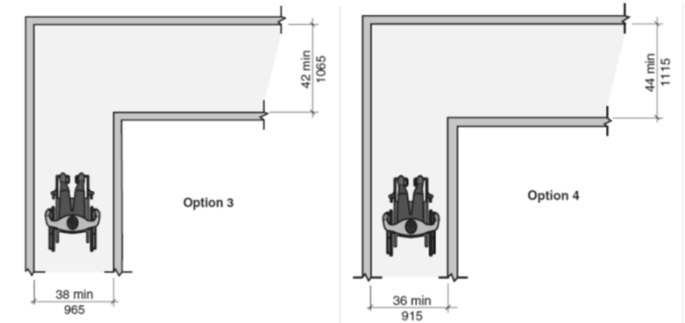


Significant Changes to the ICC A117.1 - Accessibility Standard - 2017 Edition

54

Clear Width

403.5.3 At 90-degree Turn (New)



Significant Changes to the ICC A117.1 - Accessibility Standard - 2017 Edition

56

Significant Changes to the ICC A117.1 - Accessibility Standard - 2017 Edition

Clear Width

403.5.3 At 90-degree Turn (New)

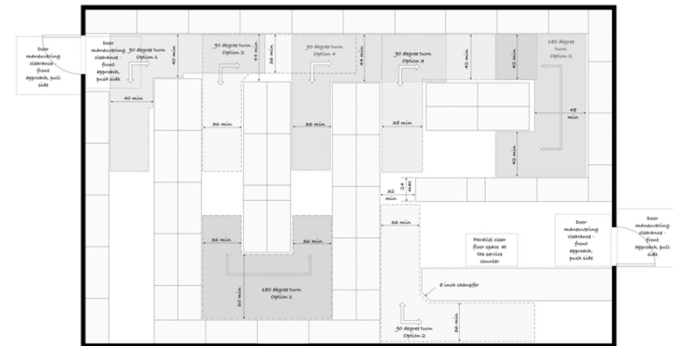
- New buildings have four options for making turns on narrow accessible routes
- Any of the options are permitted
- Exceptions exempt turns at doors, elevators, platform lifts
- Exceeds ADA
- Improves percentage of people accommodated compared to 36" routes



Significant Changes to the ICC A117.1 - Accessibility Standard - 2017 Edition

57

Impact - Turns in a small store



Significant Changes to the ICC A117.1 - Accessibility Standard - 2017 Edition

59

Clear Width

403.5.3 At 90-degree Turn (New)

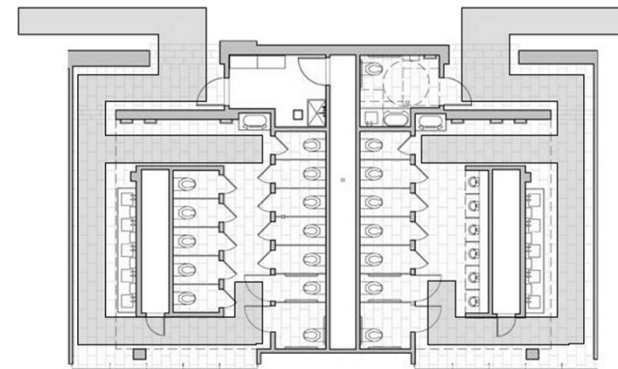
- Existing buildings may continue to use a 36" route at 90-degree turns
- 2009 Standard did not have a section for 90-degree turns but used general route requirements.
- Existing building provision match with ADA; new building provisions exceed



Significant Changes to the ICC A117.1 - Accessibility Standard - 2017 Edition

58

Impact - Multi-stall layout



Significant Changes to the ICC A117.1 - Accessibility Standard - 2017 Edition

60

Significant Changes to the ICC A117.1 - Accessibility Standard - 2017 Edition

Impact - Dining room layout

Significant Changes to the ICC A117.1 - Accessibility Standard - 2017 Edition

61

Doors, Doorways and Gates Section 404

- Added “gates” to clarify they are viewed similar to doors
- Consistent with ADA in covering “gates”
- New general exemption if “operated only by security personnel”

Significant Changes to the ICC A117.1 - Accessibility Standard - 2017 Edition

63

Clear Width 403.5.4 Passing Space

- Provisions split for new and existing buildings
- New buildings require larger T-turns and a 52” extension beyond intersection
- Exceeds ADA
- Existing building can use 2009 dimensions

Significant Changes to the ICC A117.1 - Accessibility Standard - 2017 Edition

62

Manual Doors and Gates 404.2.3 Maneuvering Clearances

New Buildings

*If both closer and latch are provided

Existing Buildings

*If both closer and latch are provided

Significant Changes to the ICC A117.1 - Accessibility Standard - 2017 Edition

64

Significant Changes to the ICC A117.1 - Accessibility Standard - 2017 Edition

Manual Doors and Gates 404.2.3 Maneuvering Clearances

2017 ICC A117.1 **2009 ICC A117.1**

* 48 min (1220) if both closer and latch provided

** If both closer and latch are provided
** 48 min (1220) if both closer and latch provided

Significant Changes to the ICC A117.1 - Accessibility Standard - 2017 Edition 65

DISCUSSION Interpretation

- Can a handrail extension overlap the door maneuvering clearance?
- Room designation sign?
- Light switch?

Significant Changes to the ICC A117.1 - Accessibility Standard - 2017 Edition 67

Manual Doors and Gates 404.2.3 Maneuvering Clearances

- Clarifies “clearance” includes width of door and required space to latch or hinge side
- 52” depth for forward approach on new buildings – was 48” depth previously
- 52” depth exceeds ADA
- 12” latch clearance eliminated on hinge approach door. Matches ADA

Significant Changes to the ICC A117.1 - Accessibility Standard - 2017 Edition 66

Impact - Vestibules

Existing **New**

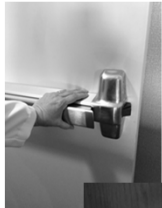
(f) (c)

Significant Changes to the ICC A117.1 - Accessibility Standard - 2017 Edition 68

Significant Changes to the ICC A117.1 - Accessibility Standard - 2017 Edition

Manual Doors and Gates

404.2.6, 404.2.8 Hardware & Opening Force



- Splits provisions for hardware and door forces
- Provides operational force for hardware
 - 15 pound forward pushing or pulling
 - 28 inch-pounds rotational motion
- Provides consistency



Significant Changes to the ICC A117.1 - Accessibility Standard - 2017 Edition

69

Doors and Gates

404.3 Automatic and Power-assisted

- If required at public entrances, it will not accept power-assisted doors. Must be automatic
- Where automatic doors used on a vestibule, must use same type door on at least one path
- Automatic doors require maneuvering clearance unless meeting one of three exceptions
- Doors in series can eliminate turning space for automatic doors (full-power or low-energy)



Significant Changes to the ICC A117.1 - Accessibility Standard - 2017 Edition

71

Doors and Gates

404.3 Automatic and Power-assisted

- Distinction between power-assisted and automatic doors
- Classifies automatic doors as full-powered or low-energy
- Clarifies how provisions apply to each door type

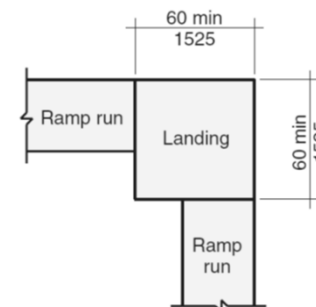


Significant Changes to the ICC A117.1 - Accessibility Standard - 2017 Edition

70

Ramps

405 Change of Direction & Clear Width



- Intended to coordinate with ADA and IBC
- Requires 60" x 60" landing at change of direction – not "turning space"
- New exception reduces ramp width due to equipment



Significant Changes to the ICC A117.1 - Accessibility Standard - 2017 Edition

72

Significant Changes to the ICC A117.1 - Accessibility Standard - 2017 Edition

406 Curb Ramps and Blended Transitions

- Creates format and provisions to address:
 - Perpendicular curb ramps
 - Parallel curb ramps
 - Blended Transitions
 - Common requirements
- Working to coordinate with proposed federal PROWAG

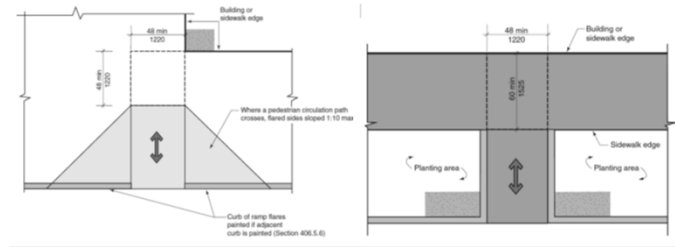


Significant Changes to the ICC A117.1 - Accessibility Standard - 2017 Edition

73

Curb Ramps

406.2 Perpendicular Curb Ramps



Significant Changes to the ICC A117.1 - Accessibility Standard - 2017 Edition

75

406 Curb Ramps and Blended Transitions

- Minimum width of 48" vs. previous 36"
- Common requirements apply to all three types – Perpendicular, Parallel & Blended
- Defines “grade breaks” and requires them to be perpendicular to run and only at top and bottom
 - Grade break changes may impact common designs



Significant Changes to the ICC A117.1 - Accessibility Standard - 2017 Edition

Workbook Page 10

74

Curb Ramps

406.2 Perpendicular Curb Ramps

- 48" min. landing length at top; 60" min. if constrained
- Larger landing (width and length) allows for turning
- Requires flared sides if circulation path crosses ramp
- Limits slope of ramp to 1:20 min., 1:12 max. but does not require ramp >15 feet.



Significant Changes to the ICC A117.1 - Accessibility Standard - 2017 Edition

76

Significant Changes to the ICC A117.1 - Accessibility Standard - 2017 Edition

Curb Ramps

406.3 Parallel Curb Ramps



- Standard did not previously contain specific regulations
- Therefore resulted in inconsistent application
- Must also use “common requirements”
- Min. 48” x 48” landing at bottom

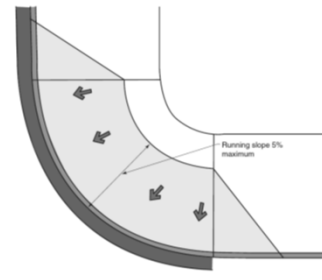


Significant Changes to the ICC A117.1 - Accessibility Standard - 2017 Edition

77

Blended Transitions

406.4 (New)



- Are not a curb “ramp” because slope $\leq 1:20$
- Rely on “common requirements” for most provisions
- Previously inconsistent applications due to no specific details in standard



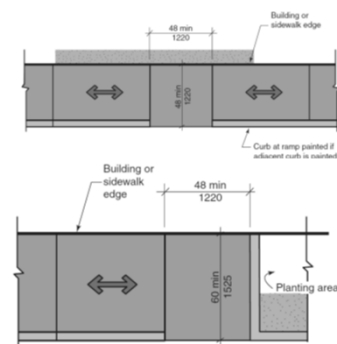
Significant Changes to the ICC A117.1 - Accessibility Standard - 2017 Edition

79

Curb Ramps

406.3 Parallel Curb Ramps

- Landing increased to 60” min. depth from street if constrained on two sides
- Limits slope of ramp to 1:20 min., 1:12 max. but does not require ramp >15 feet.



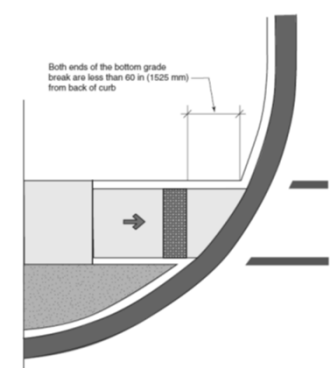
Significant Changes to the ICC A117.1 - Accessibility Standard - 2017 Edition

78

Detectable Warnings

406.6.2 Location of Warning Surfaces

- Provides one single section to regulate location of warnings
- There are five locations where warnings are required
- Includes “street crossings” on private property



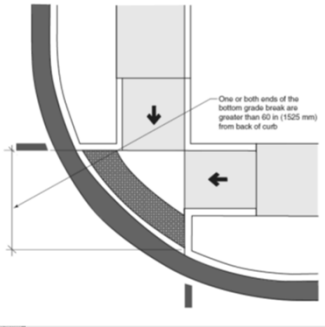
Significant Changes to the ICC A117.1 - Accessibility Standard - 2017 Edition

80

Significant Changes to the ICC A117.1 - Accessibility Standard - 2017 Edition

Detectable Warnings

406.6.2 Location of Warning Surfaces




- Trying to make private streets match federal PROWAG
- Warning required for pedestrian refuge island ≥ 6 feet
- Rail vehicle boarding and alighting areas at sidewalk or street level

Significant Changes to the ICC A117.1 - Accessibility Standard - 2017 Edition 81

Detectable Warnings

705.7 Placement

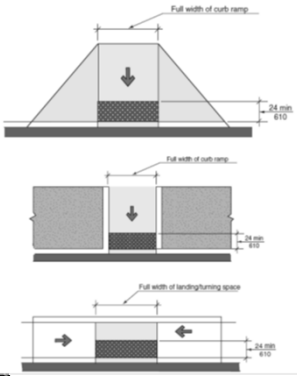


- Consolidated section addresses placement depending on protected element
- Placement for curb ramps may differ from previous due to grade breaks, curb alignment and setback
- Distinct requirements for the 3 types of curb ramps
 - Warnings not required at pedestrian refuge islands < 6 ft. in width. Need 24" between warnings

Significant Changes to the ICC A117.1 - Accessibility Standard - 2017 Edition 83

Detectable Warning Surfaces

705.6 Depth and Width




- Consolidated section provides the details for depth and width
- Connect with 406.6.2 and 705.7 regarding locations
- Better consistency
- Coordinates with federal PROWAG


Significant Changes to the ICC A117.1 - Accessibility Standard - 2017 Edition 82

Impact – Exterior route

Wider sidewalks



Wider passenger drop offs



Significant Changes to the ICC A117.1 - Accessibility Standard - 2017 Edition 84

Significant Changes to the ICC A117.1 - Accessibility Standard - 2017 Edition

Impact – Exterior route

Options for curb cuts



Blended transitions



Significant Changes to the ICC A117.1 - Accessibility Standard - 2017 Edition

85

Elevator Car Control: 407.4.6.2.2, 407.4.7.1.2 Designations



- Relocates car control designations to appropriate section
- Clarifies letter designation are permitted
- Numbers are primary designation and letters are secondary and to the right (1P)
- Two letters maximum (-1LL)

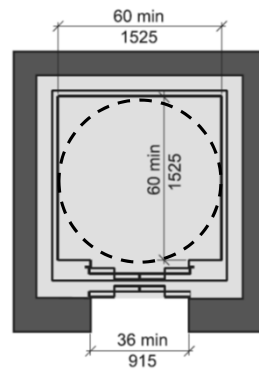


Significant Changes to the ICC A117.1 - Accessibility Standard - 2017 Edition

87

Elevator Cars Table 407.4.1 Minimum Dimensions

- Allows 60" turning circle versus compliance with Section 304 turning requirements.
- Would otherwise require 67" diameter or larger T-turns.
- Allows 2009 sizes instead of increase

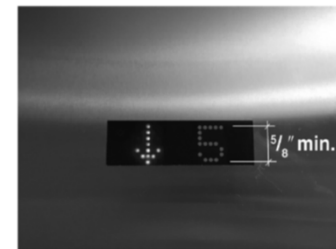


Significant Changes to the ICC A117.1 - Accessibility Standard - 2017 Edition

86

Elevator Car 407.4.9.1.1 Size of Position Indicators

- Increases character size from 1/2 to 5/8 inch min.
- Done to coordinate with Canadian size requirement
- Will increase visibility
- Coordinates with elevator standard



Significant Changes to the ICC A117.1 - Accessibility Standard - 2017 Edition

88

Significant Changes to the ICC A117.1 - Accessibility Standard - 2017 Edition

LULA Elevator Cars 408.4.1 Inside Dimensions

Adequate to provide clear floor space per Section 305.3

15.75 feet² min
1.46 m²

42 min
1065

32 min*
815

New buildings

51 min
1295

51 min
1295

36 min
915

Existing buildings – Exception 2

Significant Changes to the ICC A117.1 - Accessibility Standard - 2017 Edition 89

Private Residence Elevator 409.4.1 Inside Dimensions for Car

36 min
915

52 min
1320

New buildings

36 min
915

48 min
1220

Existing buildings

- Minimum depth increased to 52" for new buildings
- Done to coordinate with new clear floor space size
- Existing buildings can use 48" depth previously allowed by earlier standards

Significant Changes to the ICC A117.1 - Accessibility Standard - 2017 Edition 91

LULA Elevator Cars 408.4.1 Inside Dimensions

- Specifically requires by reference that complying clear floor space is provided within elevator car
- By reference that means 30" x 52" clear floor space
- Won't impact LULAs built close to minimum width
- New exception for existing buildings coordinates with ADA to accept a 51" x 51" configuration which was also acceptable in 2003 A117.1

Significant Changes to the ICC A117.1 - Accessibility Standard - 2017 Edition 90

Platform Lifts 410.5.1

For new buildings:

- Change for vertical platform lifts to new clear floor space size – 36" x 52"
- Done to coordinate with building block section
- Incline platform lift with barriers are permitted to use 36" x 48"

Significant Changes to the ICC A117.1 - Accessibility Standard - 2017 Edition 92

Significant Changes to the ICC A117.1 - Accessibility Standard - 2017 Edition

Platform Lifts

410.5.1 With Single Doors or Doors on Opposite Ends

Existing buildings:

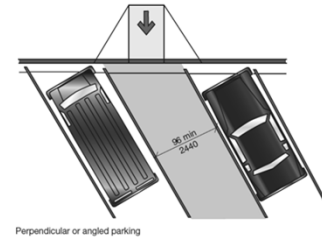
- Can use 48" depth



Significant Changes to the ICC A117.1 - Accessibility Standard - 2017 Edition

93

Parking Spaces 502.1, 502.9 (New)



(New) Standard previously did not provide guidance or requirements for on-street parking

- Added provisions related to diagonal parking and on-street parking
- On-street provisions based on and coordinate with PROWAG



Significant Changes to the ICC A117.1 - Accessibility Standard - 2017 Edition

95

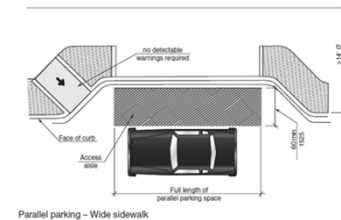
Chapter 5: General Site and Building Elements

- | | |
|-----------------------------------------------------------------------------------------------------|-------------------------------------------------------------------------------------------|
| <ul style="list-style-type: none"> Parking Loading Zones Stairways | <ul style="list-style-type: none"> Windows Routes Through Parking |
|-----------------------------------------------------------------------------------------------------|-------------------------------------------------------------------------------------------|



Parking Spaces 502.1, 502.9

- “On-street” addresses parallel, perpendicular or angled parking
- Parallel provisions depend on width of sidewalk or right-of-way
- Use “Wide” if >14 ft. width right-of-way, “Narrow” if ≤14 ft.



Significant Changes to the ICC A117.1 - Accessibility Standard - 2017 Edition

96

Significant Changes to the ICC A117.1 - Accessibility Standard - 2017 Edition

Parking Meters and Pay Stations 502.10 (New)



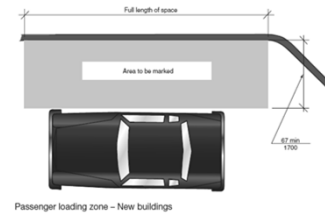
- Provisions added to address location and access to on-street parking meters and pay stations.
 - Not applicable to parking lots
- Done to coordinate with PROWAG
- Requires: Compliance with operable parts, location at end of stall, visible display at 40" max.



Significant Changes to the ICC A117.1 - Accessibility Standard - 2017 Edition

97

Passenger Loading Zones 503.3.2 Access Aisle



- Increases width to 67" instead of previous 60"
 - "Existing" can use 60"
- Done to accommodate larger mobility devices
- Length modified to "full-length" of pull-up space versus 20 ft. min.
- Length coordinates with ADA



Significant Changes to the ICC A117.1 - Accessibility Standard - 2017 Edition

99

Electrical Vehicle Charging Station 502.11 (New)

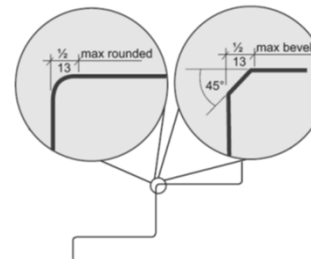
- Ensures they are accessible and usable
- Regulated "where provided" at parking spaces
- Provisions address operable parts, accessible route, obstructions
- Applies to both parking lots and on-street parking



Significant Changes to the ICC A117.1 - Accessibility Standard - 2017 Edition

98

Stairway Nosings 504.5



- Revised formatting to make requirements clearer and easy to understand
- Beveled nosing modified to limit the reduction of the tread depth
- Bevel limited to 45 degree angle



Significant Changes to the ICC A117.1 - Accessibility Standard - 2017 Edition

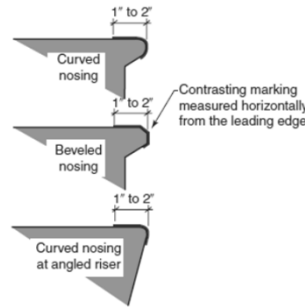
100

Significant Changes to the ICC A117.1 - Accessibility Standard - 2017 Edition

Stairways

504.6, 504.9.1 Visual Contrast and Illumination Levels

- Clarity will make stairs safer by being more consistent
- Helpful for people with visual impairment
- Addresses nosing on treads and landings
- Illumination control addressed



Significant Changes to the ICC A117.1 - Accessibility Standard - 2017 Edition

101

Windows

506, 1102.9, 1102.13, 1103.9, 1103.13

- Separate force provisions for latch or operable parts versus window opening force
- Four forces on a window – locking, unlocking, opening and closing
 - Locking/unlocking are operable parts
 - Opening/closing - AAMA 513



Significant Changes to the ICC A117.1 - Accessibility Standard - 2017 Edition

103

Tactile Signage Within Stairway Enclosures and at Exits 504.10, 504.11



- Clarifies signage requirement within stairway enclosure and at exit doors
- Tactile (raised character and braille) sign at:
 - Door to area of refuge with direct access to stairway
 - Exterior area for assisted rescue
 - Exit stairway or ramp
 - Exit passageway
 - Exit discharge



Significant Changes to the ICC A117.1 - Accessibility Standard - 2017 Edition

102

Windows

506, 1102.9, 1102.13, 1103.9, 1103.13

Operating force for opening/closing windows:

- 8.5 pounds max. for vertical or horizontal sliding
- 5 pounds max. for all other types
- Type A units only regulate height and clear floor space
- Accessible and Type A units exempt windows in kitchens and bathrooms



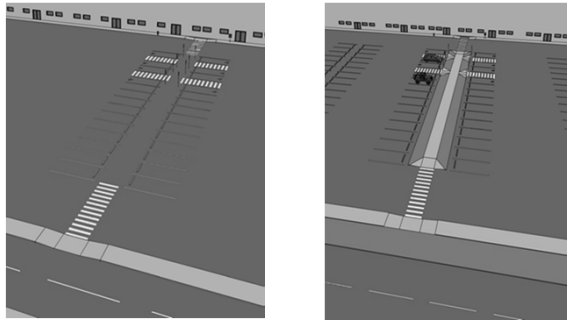
Significant Changes to the ICC A117.1 - Accessibility Standard - 2017 Edition

104

Significant Changes to the ICC A117.1 - Accessibility Standard - 2017 Edition

Parking

507 Accessible Routes Through (New)



Significant Changes to the ICC A117.1 - Accessibility Standard - 2017 Edition

105

Chapter 6: Plumbing Elements and Facilities

- Bottle filling stations
- Toilets compartments
- Lavs and Sinks
- Showers
- Bench in Sauna and Steam Room



Parking

507 Accessible Routes Through (New)

- Regulates routes through parking facilities
 - Exempts crossing drive aisle
 - Exempts routes from parking spaces or loading zones which comply with Sections 502 and 503 provisions
- Does not specify means of protection
- May avoid provisions completely if accessible route runs around the parking area



Significant Changes to the ICC A117.1 - Accessibility Standard - 2017 Edition

106

Drinking Fountains and Bottle Filling Stations 602



- Reformats provisions for drinking fountains to separately address:
 - Wheelchair
 - Standing
- Clarifies children's size exemptions
- Adds section for bottle filling stations



Significant Changes to the ICC A117.1 - Accessibility Standard - 2017 Edition

108

Significant Changes to the ICC A117.1 - Accessibility Standard - 2017 Edition

Grab Bars for Water Closets 604.5.1, 604.5.2

Reformatted to brief sections for clarity:

- Horizontal grab bar
- Vertical grab bar
- Rear wall grab bar
- Slight technical difference for children's vertical bar
 - Must use appropriate location for children



Significant Changes to the ICC A117.1 - Accessibility Standard - 2017 Edition

109

Water Closets and Compartments 604.7.1, 604.11.7 Dispensers

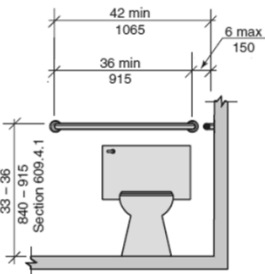
- Adds new exception to permit compliance with ADA location requirements
- Applies to adult and children's fixtures
- Limits application to two-roll dispenser using 5" diameter rolls



Significant Changes to the ICC A117.1 - Accessibility Standard - 2017 Edition

111

Grab Bars for Water Closets 604.5.1, 604.5.2



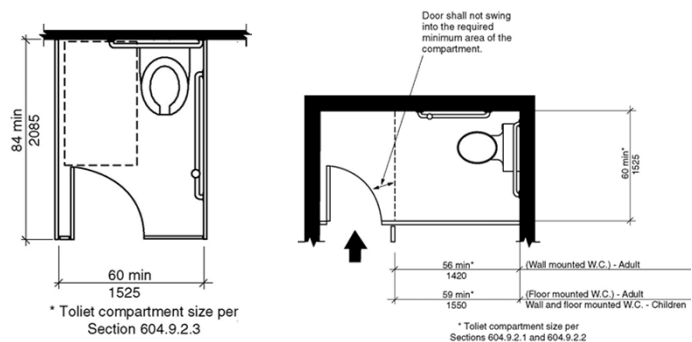
- Reformatted rear wall bar requirements for clarity
- Rear grab bar measured from side wall vs. centerline of W.C.
- May require longer rear bar due to 3 requirements
- May differ from ADA if not set exactly at 6" with W.C. not set exactly at 18"



Significant Changes to the ICC A117.1 - Accessibility Standard - 2017 Edition

110

Wheelchair Accessible Toilet Compartments 604.9.2.3, 604.9.3, 604.10.3 Alternate



Significant Changes to the ICC A117.1 - Accessibility Standard - 2017 Edition

112

Significant Changes to the ICC A117.1 - Accessibility Standard - 2017 Edition

Wheelchair Accessible Toilet Compartments 604.9.2.3, 604.9.3, 604.10.3 Alternate

- Provides alternative wheelchair toilet compartment
- Door allowed to swing into compartment if clear floor space beyond arc of door
- Allowed as alternate by Section 604.9.2
- Compartment door provisions also revised for wheelchair and ambulatory stalls
- Section 404 maneuvering clearances not required within stalls
- Clarifies previous intent

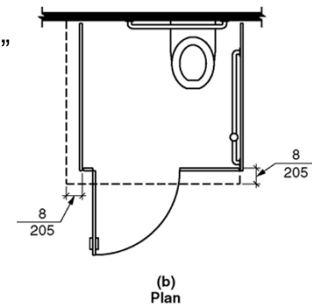


Significant Changes to the ICC A117.1 - Accessibility Standard - 2017 Edition

113

Wheelchair Accessible Compartment 604.9.5.1, 604.9.5.2 Toe Clearance

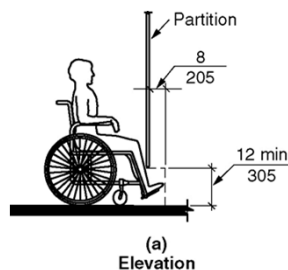
- Toe clearance beyond partition increased from 6" to 8" minimum depth
- Study indicated 6" depth only served 25% of users
- Exceptions revised to eliminate clearance if compartment dimensions increased equivalent amount.



Significant Changes to the ICC A117.1 - Accessibility Standard - 2017 Edition

115

Wheelchair Accessible Compartment 604.9.5.1, 604.9.5.2 Toe Clearance



- Minimum height of adult compartment partitions raised to 12 inches
- Coordinates with the previous requirement for children's use
- Based on mobility report, previous height only accommodated 50% of users

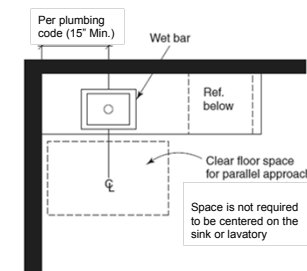


Significant Changes to the ICC A117.1 - Accessibility Standard - 2017 Edition

114

Lavatories and Sinks: 606.2 Clear Floor Space

- Deleted requirement for parallel clear floor space to be "centered" on the sink or lavatory.
- Sink location is regulated by plumbing code and is centered at least 15 inches from adjacent wall minimum.



Significant Changes to the ICC A117.1 - Accessibility Standard - 2017 Edition

Workbook Page 43

116

Significant Changes to the ICC A117.1 - Accessibility Standard - 2017 Edition

Lavatories and Sinks: 606.2 Clear Floor Space



Elements in corners can be hard to reach from side.

- “Centering” requirement would have pushed sink farther from corner due to larger clear floor space (52” length)
- With shoulder alignment/reach range; the 15” requirement should work.

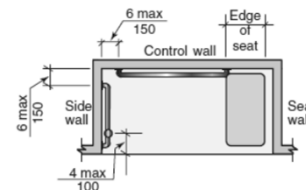


Significant Changes to the ICC A117.1 - Accessibility Standard - 2017 Edition

117

Standard Roll-in Shower

608.3.2 Grab Bars



Back wall grab bar

- not required to exceed 48”
- not required to extend to corner if it requires bar to exceed 48”

Side wall grab

- not required to exceed 30”

Vertical grab bar

- located 3 to 6” above vertical grab bar

- Vertical grab bar required on sidewall opposite seat if ≤ 72 ” from seat wall
- Helps users walk-in or stand to shower
- Format revised to individual sections for each grab bar
- 48” max. length for back wall grab bar

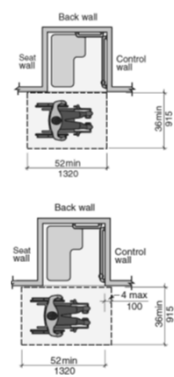


Significant Changes to the ICC A117.1 - Accessibility Standard - 2017 Edition

119

Clearance for Transfer Shower 608.2.1.2

- Clearance length increased to 52” in new buildings. Remains 48” for existing buildings
- Coordinates with new clear floor space requirement in 305.3.1
- Clearance located from control wall or from point 4” behind control wall.

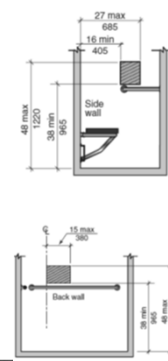


Significant Changes to the ICC A117.1 - Accessibility Standard - 2017 Edition

118

Alternate Roll-in Shower

608.4.3 Controls and Hand Showers



- Provides more limited location for controls and hand showers
- Keeps controls from being located over seat if placed on side wall
- Puts controls towards open transfer side if located on back wall
- Locations coordinate with transfer and roll-in shower locations



Significant Changes to the ICC A117.1 - Accessibility Standard - 2017 Edition

120

Significant Changes to the ICC A117.1 - Accessibility Standard - 2017 Edition

Sauna and Steam Rooms

612.2 Bench

- Single user rooms allow door to swing in if clear floor space is provided beyond arc of door
- Requirement is similar to single user toilet rooms and dressing/fitting rooms.
- Bench provisions revised in Section 903 (covered later) but impacts this section also

Door permitted to swing over clear floor space at bench

64" x 60" T-tum

Clear floor space beyond door swing

Clear floor space to access end of bench

Significant Changes to the ICC A117.1 - Accessibility Standard - 2017 Edition 121

Impact – Single occupant toilet room design

Existing New

Significant Changes to the ICC A117.1 - Accessibility Standard - 2017 Edition 123

Impact – Single occupant toilet room design

Existing New

Significant Changes to the ICC A117.1 - Accessibility Standard - 2017 Edition 122

Impact – Single occupant toilet room design

Existing New

Significant Changes to the ICC A117.1 - Accessibility Standard - 2017 Edition 124

Significant Changes to the ICC A117.1 - Accessibility Standard - 2017 Edition

Chapter 7: Communication Elements and Features

- Alarms
- Signs
- Wheelchair Accessible Telephones
- Visual Relay Service Booth
- Detectable Warnings



Nonglare Finish for Visual Characters, Pictograms and Symbols of Accessibility 703.2.10.1, 703.5.3.1, 703.6.2.1



- Provides a specific measurable limit of glare on signage
- Limit will provide greater consistency versus simple visual preference
- Section 703.5.3.2 added to address character contrast of pictogram text descriptors



Significant Changes to the ICC A117.1 - Accessibility Standard - 2017 Edition

127

Alarms 702.1



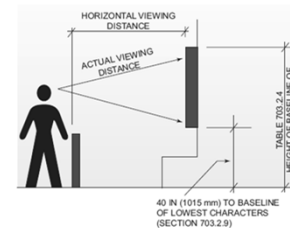
- Clarifies distinction between building alarm system and notification requirements within dwelling units
- Building fire alarms comply with Section 702.1
- Audible and visible notification appliances within dwelling and sleeping units comply with Section 1106



Significant Changes to the ICC A117.1 - Accessibility Standard - 2017 Edition

126

Visual & Low-Resolution VMS Tables 703.2.4, 703.7.4 Character Height



- New footnote clarifies how viewing heights are measured
- Will provide consistency in applying provisions
- Character height will be based on baseline of highest line of characters
- Height and distance are the two primary factors



Significant Changes to the ICC A117.1 - Accessibility Standard - 2017 Edition

128

Significant Changes to the ICC A117.1 - Accessibility Standard - 2017 Edition

Visual & Low-Resolution VMS Tables 703.2.4, 703.7.4 Character Height

2017 STANDARD: TABLE 703.2.4 Visual Character Height

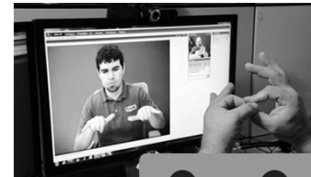
Height above Floor to Baseline of Character ¹	Horizontal Viewing Distance	Minimum Character Height
40 inches (1015 mm) to less than or equal to 70 inches (1780 mm)	Less than 6 feet (1830 mm)	$\frac{5}{8}$ inch (16 mm)
	6 feet (1830 mm) and greater	$\frac{5}{8}$ inch (16 mm), plus $\frac{1}{8}$ inch (3.2 mm) per foot (305 mm) of viewing distance above 6 feet (1830 mm)
Greater than 70 inches (1780 mm) to less than or equal to 120 inches (3050 mm)	Less than 15 feet (4570 mm)	2 inches (51 mm)
	15 feet (4570 mm) and greater	2 inches (51 mm), plus $\frac{1}{4}$ inch (3.2 mm) per foot (305 mm) of viewing distance above 15 feet (4570 mm)
Greater than 120 inches (3050 mm)	Less than 21 feet (6400 mm)	3 inches (75 mm)
	21 feet (6400 mm) and greater	3 inches (75 mm), plus $\frac{1}{4}$ inch (3.2 mm) per foot (305 mm) of viewing distance above 21 feet (6400 mm)

¹ The vertical height is measured from the floor of the viewing position to the baseline of the highest line of characters

Significant Changes to the ICC A117.1 - Accessibility Standard - 2017 Edition

129

Visual Relay Service Booth 704.7 (New)



- Provides basic design details for the space
- Booths allow location to sign a video interpreter
- Not scoped by building code
- Addresses lighting, background, seating, privacy and two-way communication



Video Interpreter

Significant Changes to the ICC A117.1 - Accessibility Standard - 2017 Edition

131

Wheelchair Accessible Telephones 704.2

- Clarifies that only the clear floor space is exempted for drive-up phones
- Must comply with all other applicable requirements
- Previously exempted all aspects
- Differs from ADA which exempts these phones; A117.1 provision may not be totally appropriate



Significant Changes to the ICC A117.1 - Accessibility Standard - 2017 Edition

130

Detectable Warning Surfaces

Covered previously with Section 406

- Section 705.6, Depth and Width
- Section 705.7, Placement

Addressed on pages 117 to 121 in workbook, but moved up to follow Section 406 in this presentation to show in context with curb ramp provisions

Significant Changes to the ICC A117.1 - Accessibility Standard - 2017 Edition

132

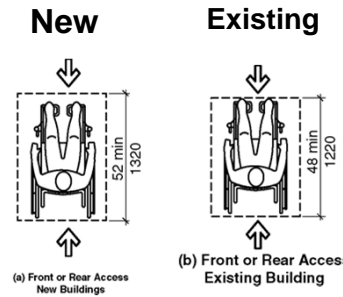
Significant Changes to the ICC A117.1 - Accessibility Standard - 2017 Edition

Chapter 8: Special Rooms and Spaces

- Assembly seating
- Sign language interpreter stations
- Kitchens
- Classroom acoustics



Wheelchair Space in Assembly Areas 802.4, 802.5.1 Depth



- Size of and access to wheelchair space revised based on larger clear floor space in new buildings
- Allows depth to extend into aisle up to 4 inches
- Overlap is not allowed for width.



Significant Changes to the ICC A117.1 - Accessibility Standard - 2017 Edition

135

Assembly Areas: Definitions



For Review – Not a change

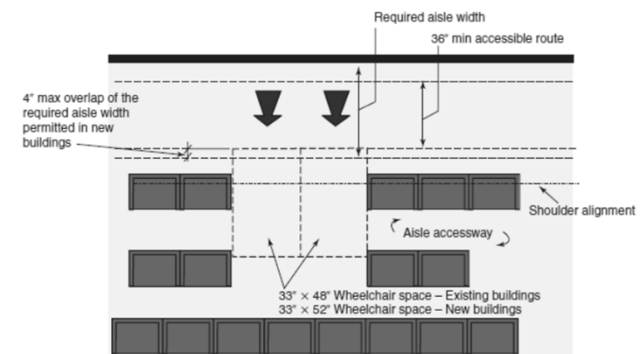
- **wheelchair space:** A space for a single wheelchair and its occupant.
- **wheelchair space locations:** A space for a minimum of a single wheelchair and the associated companion seating. Wheelchair space locations can contain multiple wheelchair spaces and associated companion seating.



Significant Changes to the ICC A117.1 - Accessibility Standard - 2017 Edition

134

Wheelchair Space in Assembly Areas 802.4, 802.5.1 Depth



Significant Changes to the ICC A117.1 - Accessibility Standard - 2017 Edition

136

Significant Changes to the ICC A117.1 - Accessibility Standard - 2017 Edition

Companion Seat Alignment 802.7.2

- Allows a range for shoulder alignment due to clear floor space size increase

(a) Elevation

Alignment - Forward approach

Alignment - Side approach

Significant Changes to the ICC A117.1 - Accessibility Standard - 2017 Edition

137

Wheelchair Space Dispersion 802.10.4 Primarily for Viewing Motion Pictures

- Clarifies that wheelchair spaces can be located on a riser or cross-aisle in tiered seating
- Eliminates the doubt those locations are “integrated” with general seating
- Coordinates with options allowed by ADA for distance from screen

Significant Changes to the ICC A117.1 - Accessibility Standard - 2017 Edition

139

Companion Seat Alignment 802.7.2

- Alignment is not required for seating at tiered dining or work surfaces
- Examples:
 - Dinner theaters
 - Lecture halls
- Dispersion should be based on general assembly seating (802.10)

Significant Changes to the ICC A117.1 - Accessibility Standard - 2017 Edition

138

Sign Language Interpreter Stations 802.11

- Standard does not require these interpreter stations
- Provides design parameters for station, including:
 - Size
 - Viewing angle and distance
 - Lighting
 - Backdrop

Significant Changes to the ICC A117.1 - Accessibility Standard - 2017 Edition

140

Significant Changes to the ICC A117.1 - Accessibility Standard - 2017 Edition

Sign Language Interpreter Stations 802.11

General requirements:

- **Size:** Clear floor area 24" deep by 36" wide
- **Location:** Serves seating within 65' horizontal distance, 60 degrees to left and right, and view from 36" to 72" above station floor
- **Illumination:** Capable of providing 10 foot-candles in station at height of 48" above floor
- **Backdrop:** Wall or backdrop less than 10' behind station to height of 96" above floor, with monochromatic low luster finish



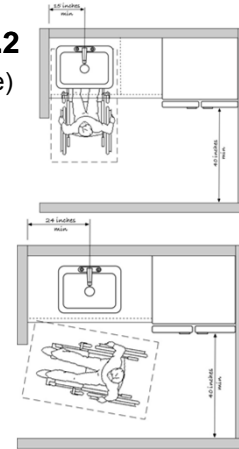
Significant Changes to the ICC A117.1 - Accessibility Standard - 2017 Edition

141

Kitchen Clearance 804.2, 1103.12.1.2, 1104.12.1.2

Kitchenettes: (No cooktop or range)

- Requires 40 inch minimum clearance between cabinets, appliance and any walls at kitchenettes.
- Pass thru not required for kitchenette.
- Work surface not required in kitchenette.
- Parallel approach at sink.
- Turning space where within an Accessible or Type A unit.



Significant Changes to the ICC A117.1 - Accessibility Standard - 2017 Edition

143

Kitchen Clearance 804.2, 1103.12.1.2, 1104.12.1.2

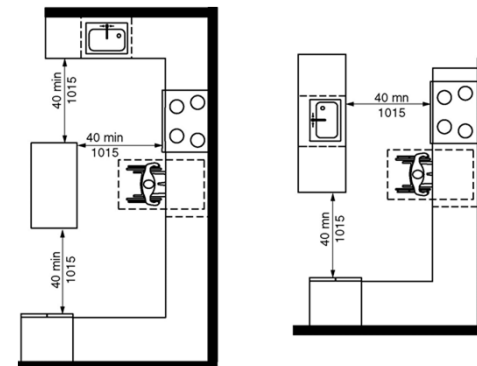
- Term "kitchenette" is typically dropped and provisions based on "where a cooktop or conventional range is not provided."
 - Must meet 40" minimum clearance
 - Not required to meet pass-through or U-shaped requirements
- Pass-through and U-shaped kitchen provisions revised to address islands and clearances
 - Previously inconsistent enforcement regarding appropriate clearance where islands were used



Significant Changes to the ICC A117.1 - Accessibility Standard - 2017 Edition

142

Kitchen Clearance 804.2, 1103.12.1.2, 1104.12.1.2



Significant Changes to the ICC A117.1 - Accessibility Standard - 2017 Edition

144

Significant Changes to the ICC A117.1 - Accessibility Standard - 2017 Edition

Impact - Kitchen

Accessible work surface

T-Turn Option 3

Greater than 40" due to T-Turn in room

Significant Changes to the ICC A117.1 - Accessibility Standard - 2017 Edition 145

Enhanced Acoustics for Classrooms 808 (New)

Classroom Acoustics Requirements

Learning Space	Greatest one hour average sound level of exterior source background noise	Greatest one hour average sound level of interior source background noise	Maximum reverberation times for sound pressure levels in octave bands with frequencies of 500, 1000 and 2000 Hz.
Classrooms with an enclosed volume of <= 10,000 cubic feet	35 dBA/55 dBC	35 dBA/55 dBC	0.6 seconds
Classrooms with an enclosed volume of > 10,000 cubic feet and <= 20,000 cubic feet	35 dBA/55 dBC	35 dBA/55 dBC	0.7 seconds

Significant Changes to the ICC A117.1 - Accessibility Standard - 2017 Edition 147

Enhanced Acoustics for Classrooms 808 (New)

- Provides guidance to improve acoustics by controlling:
 - Reverberation
 - Ambient sound levels
- Currently only for rooms ≤ 20,000 ft³
- Helps improve hearing and comprehension/learning

Significant Changes to the ICC A117.1 - Accessibility Standard - 2017 Edition 146

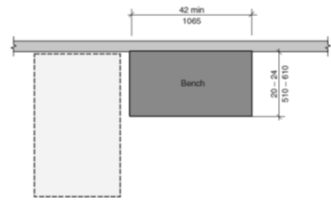
Chapter 9: Built-In Furnishings and Equipment

- Benches
- Sales and service counters
- Charging stations
- Gaming machines and tables

Significant Changes to the ICC A117.1 - Accessibility Standard - 2017 Edition

Benches

903.2 Clear Floor Space



- Clear floor space required at short end of bench
- Done to coordinate with ADA
- Reverses 2009 standard which allowed parallel approach to front of bench



Significant Changes to the ICC A117.1 - Accessibility Standard - 2017 Edition

149

Sales/Service Counters & Windows

904.3

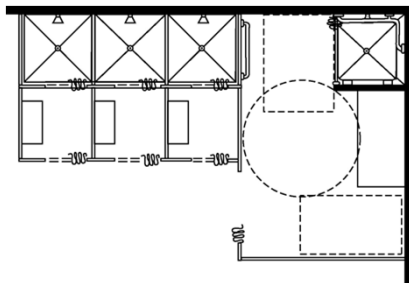
- “Windows” added into technical requirements
- Regulates “public portion” “where counters are provided”
- Employee side is not regulated since it is a work area
- Clarifies small (<36” length) parallel counters are OK if that is entire counter length



Significant Changes to the ICC A117.1 - Accessibility Standard - 2017 Edition

151

Impact – Shower rooms with dressing areas



Significant Changes to the ICC A117.1 - Accessibility Standard - 2017 Edition

150

Sales/Service Counters & Windows

904.3

- Applicable to public side (not employee side)
- Side or front approach
- Equal customer counter
- Maximum barrier height to allow for face-to-face contact between employee and customer
- Allowance for security windows



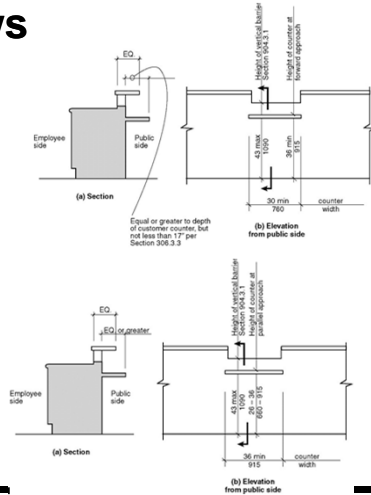
Significant Changes to the ICC A117.1 - Accessibility Standard - 2017 Edition

152

Significant Changes to the ICC A117.1 - Accessibility Standard - 2017 Edition

Service windows – 904.3

- Applicable to public side (not employee side)
- Side or front approach
- Equal customer counter
- Maximum barrier height to allow for face-to-face contact between employee and customer
- Allowance for security windows

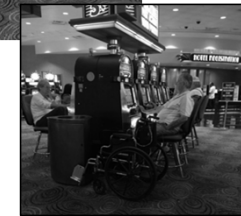
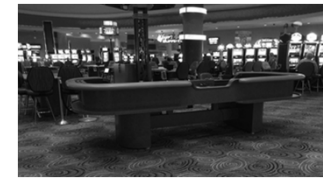


Significant Changes to the ICC A117.1 - Accessibility Standard - 2017 Edition

153

Gaming machines and tables 907 (New)

- Clear floor space next to gaming table or machine
- Can use transfer to a fixed seat or clear floor space



Significant Changes to the ICC A117.1 - Accessibility Standard - 2017 Edition

155

Charging Stations 906, 802.10.3.1, 1102.15.4 (New)

- Provides technical requirement for charging stations
- Allows charging where wheelchair will be sitting for extended periods
- Required in Accessible units; and "if provided" in assembly spaces



Significant Changes to the ICC A117.1 - Accessibility Standard - 2017 Edition

154

Chapters 10 & 11 Recreational Facilities and Dwelling Units and Sleeping Units

- The order of the two chapters has been flipped.
- Chapter 10 is Recreation, Chapter 11 is Dwelling provisions
- Coordinates with the ADA chapter format by having Chapter 10 address recreation facilities (ADA does not have a Chapter 11)



Significant Changes to the ICC A117.1 - Accessibility Standard - 2017 Edition

156

Significant Changes to the ICC A117.1 - Accessibility Standard - 2017 Edition

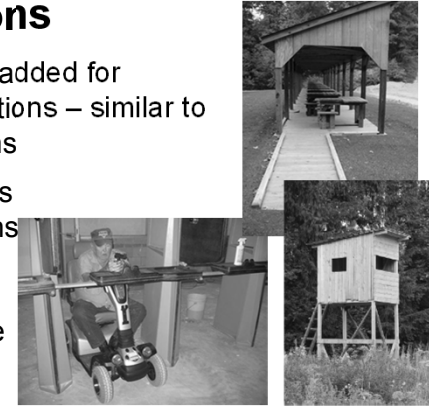
Chapter 10: Recreational Facilities

- Recreational facilities



1110 Shooting Facilities with Firing Positions

- General exception added for elevated firing positions – similar to press box limitations
- Counters or barriers at shooting positions have 34 inch max. height - similar to dining/work surface



Significant Changes to the ICC A117.1 - Accessibility Standard - 2017 Edition

159

Golf Facilities

1006.2 Accessible Routes (New)



- Separates exterior route provisions that allow a golf car to be used from the general Chapter 4 route provisions
- Distinction between interior and exterior routes
- 48" min. width; 60" if constrained
- Shelters regulated "if provided"



Significant Changes to the ICC A117.1 - Accessibility Standard - 2017 Edition

Workbook Page 161

158

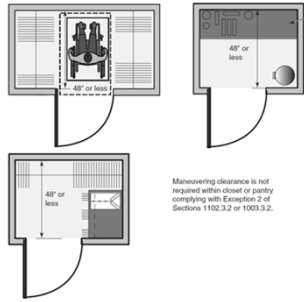
Chapter 11: Dwelling Units and Sleeping Units

- Accessible units
- Type A units
- Type B units
- Units with communication features



Significant Changes to the ICC A117.1 - Accessibility Standard - 2017 Edition

Doors and Doorways 1102.5, 1103.5



Maneuvering clearance is not required within closet or pantry complying with Exception 2 of Sections 1102.3.2 or 1103.3.2.

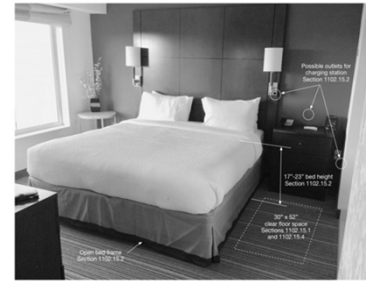
- New exception clarifies door maneuvering clearances are not needed inside limited size closets and pantries
- If space does not allow full entry, no need for complying with 404 inside the space



Significant Changes to the ICC A117.1 - Accessibility Standard - 2017 Edition

161

Beds 1102.15.2 (New)



- Charging Station:
 - Compliant with 906
 - Charge a motorized wheelchair
 - Same space as transfer space next to bed in Accessible unit
- Mattress height
 - 17 to 23 inches from floor to top of mattress (uncompressed)

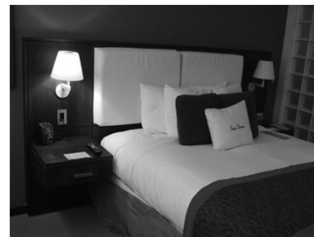


Significant Changes to the ICC A117.1 - Accessibility Standard - 2017 Edition

163

Beds 1102.15.2 (New)

- New requirements:
 - Limit range for bed height
 - Require charging station
- Applicable to accessible bed in Accessible units
 - Applicable to only one bed in the unit



Significant Changes to the ICC A117.1 - Accessibility Standard - 2017 Edition

162

Work Surface and Kitchen Sink 1103.12.3, 1103.12.4 Type A Units



Within a Type A unit which does not contain a cooktop or conventional oven, exceptions have been added to:

- Eliminate work surface
- Permit parallel approach to kitchen sink
- Coordinates with 2009 provision for Accessible units and general kitchens



Significant Changes to the ICC A117.1 - Accessibility Standard - 2017 Edition

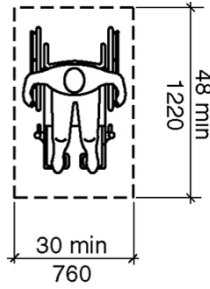
164

Significant Changes to the ICC A117.1 - Accessibility Standard - 2017 Edition

Type B units

1104

- Numerous changes throughout 1104 – but generally do not create technical changes
- Needed due to changes in “building block” provisions of Chapter 3
 - Keep old size
 - Match FHA
- **Examples:** Clear width (90° & 180° turns), primary entrance doors, Elevators and platform lifts.



Significant Changes to the ICC A117.1 - Accessibility Standard - 2017 Edition

165

Mailboxes

1104.1.2

- Mailboxes for Type B units are permitted a high reach range of 54” vs. previous 48”
- Expands height and hopefully reduces length of room size
- Coordinates with HUD and US Postal Service



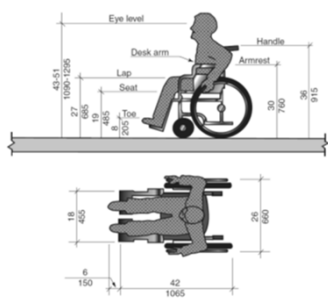
Significant Changes to the ICC A117.1 - Accessibility Standard - 2017 Edition

167

Clear Floor Space

1104.1.1

- Establishes that a 48” length is still used for the clear floor space in Type B units
- This separates 1104 from general provisions in building block section
- Done by direct reference, requirement for “Clear floor space” or partial references



Significant Changes to the ICC A117.1 - Accessibility Standard - 2017 Edition

166

User Passage Doorways

1104.5.2

- Clarifies shower doors are not “user passage doorways” which must meet normal Type B unit door provisions
 - Allows a reduced clear width
 - Allows tracks or “thresholds” for shower doors that exceed 1/2”

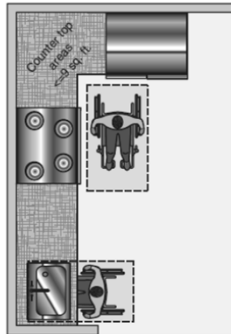


Significant Changes to the ICC A117.1 - Accessibility Standard - 2017 Edition

168

Significant Changes to the ICC A117.1 - Accessibility Standard - 2017 Edition

Operable Parts – Type B units 1104.9



- Reference to 1104.1.1 reinforces that 48" clear floor space is permitted.
- Retains operable parts section in Type B units instead of relying on 309
- Adds exception for outlets in corner of kitchen cabinet between two appliances.

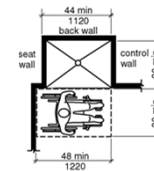
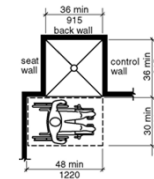


Significant Changes to the ICC A117.1 - Accessibility Standard - 2017 Edition

169

Shower Compartment 1104.11.3.1.3.3

- Transfer shower was limited to 36" x 36" minimum size dimensions
- Allows 30" x 44" min. as alternate for equivalent area
- Any size shower door permitted



Significant Changes to the ICC A117.1 - Accessibility Standard - 2017 Edition

171

Laundry Equipment 1104.10.1 Clear Floor Space

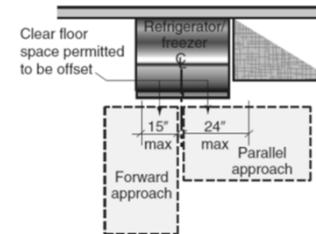
- Change to keep 30" x 48" clear floor space
- Since no requirements for operable parts on appliances, Type B units can use stackable machines



Significant Changes to the ICC A117.1 - Accessibility Standard - 2017 Edition

170

Clear Floor Space 1104.12.2.5 Refrigerator/Freezer



- Permits a forward approach
- Coordinates with Fair Housing Accessibility Guidelines
- Offset is limited to 15" for forward approach
- Remember clear floor space is 30" x 48"



Significant Changes to the ICC A117.1 - Accessibility Standard - 2017 Edition

172

Significant Changes to the ICC A117.1 - Accessibility Standard - 2017 Edition

Units with Communication Features 1106.5.1 Primary Entrance - Notification

- Requires a means of disconnecting visible doorbell signals if they are located in the sleeping area
- Done to coordinate with ADA requirement
- Visible signals typically are located in sleeping room while audible is typically in a hall where a door can close



Significant Changes to the ICC A117.1 - Accessibility Standard - 2017 Edition

173

Thank you for participating

To schedule a seminar, contact:

The ICC Training & Education Department
1-888-ICC-SAFE (422-7233) Ext. 33821

or

E-mail: icctraining@iccsafe.org

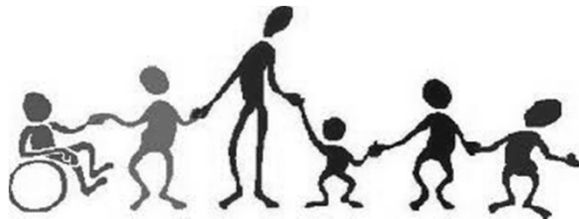


Significant Changes to the ICC A117.1 - Accessibility Standard - 2017 Edition

175



Questions?



Significant Changes to the ICC A117.1 - Accessibility Standard - 2017 Edition

174

International Code Council is a Registered Provider with The American Institute of Architects Continuing Education Systems. Credit earned on completion of this program will be reported to CES Records for AIA members. Certificates of Completion for non-AIA members are available on request.

This program is registered with the AIA/CES for continuing professional education. As such, it does not include content that may be deemed or construed to be an approval or endorsement by the AIA of any material of construction or any method or manner of handling, using, distributing, or dealing in any material or product. Questions related to specific materials, methods, and services will be addressed at the conclusion of this presentation.

Significant Changes to the A117.1 Accessibility Standard - 2017 Edition
Significant Changes to the ICC A117.1 - Accessibility Standard - 2017 Edition



Significant Changes to the ICC A117.1 - Accessibility Standard - 2017 Edition

Copyright Materials

This presentation is protected by US and International Copyright laws. Reproduction, distribution, display and use of the presentation without written permission of the speaker is prohibited.

© International Code Council 2018



Significant Changes to the ICC A117.1 - Accessibility Standard - 2017 Edition

177